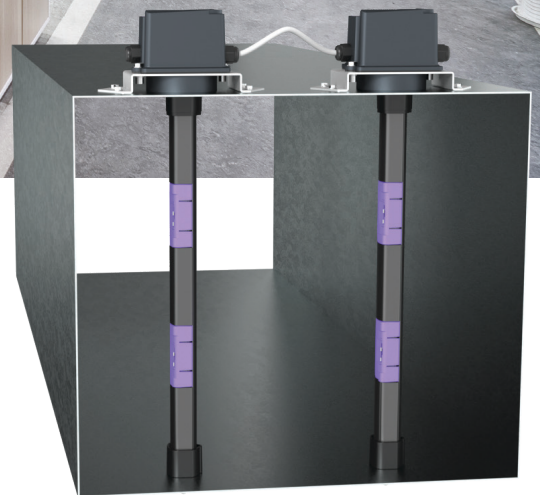


# STREAM

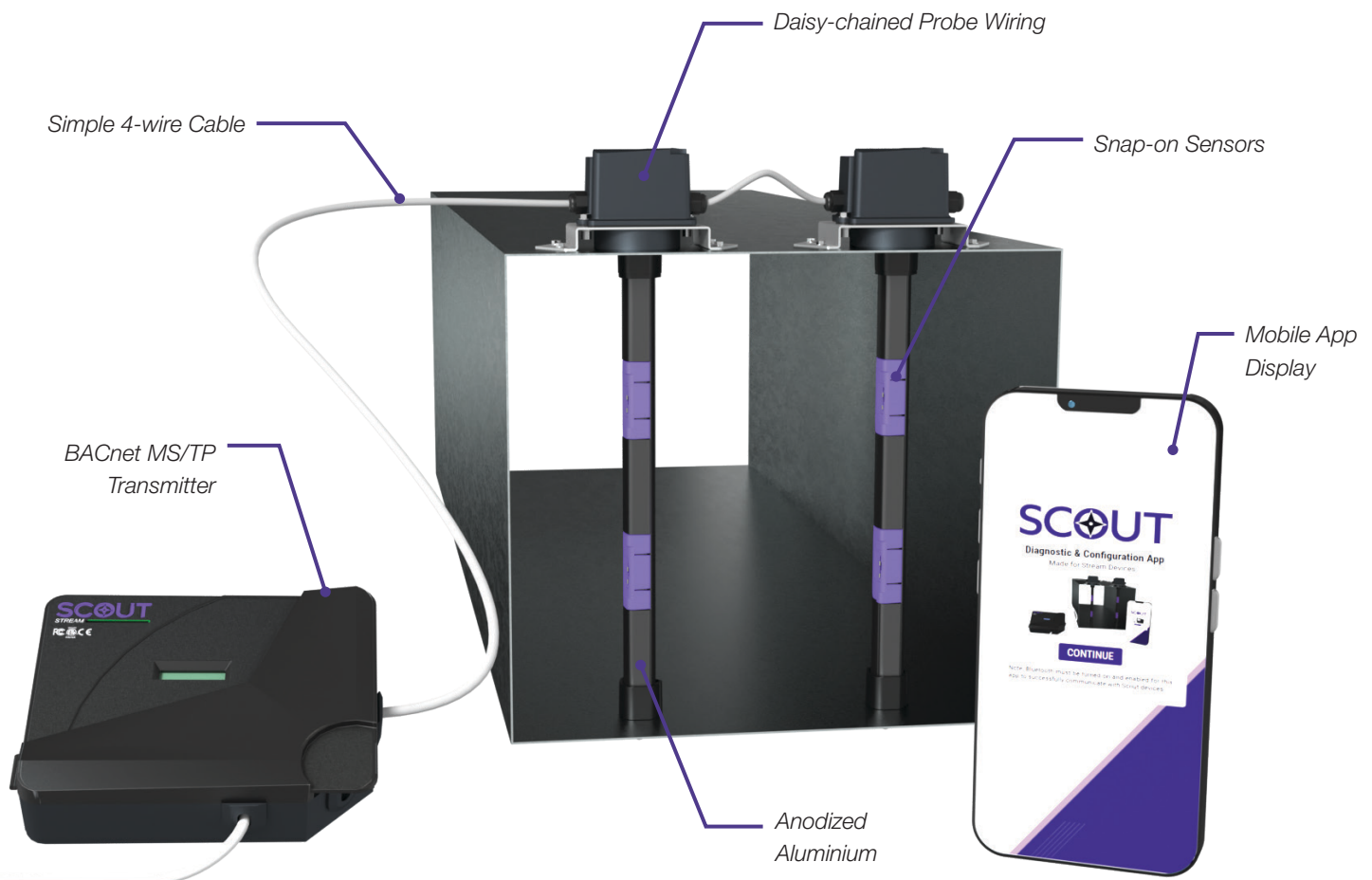
AIRFLOW MEASUREMENT PLATFORM



# SCOUT

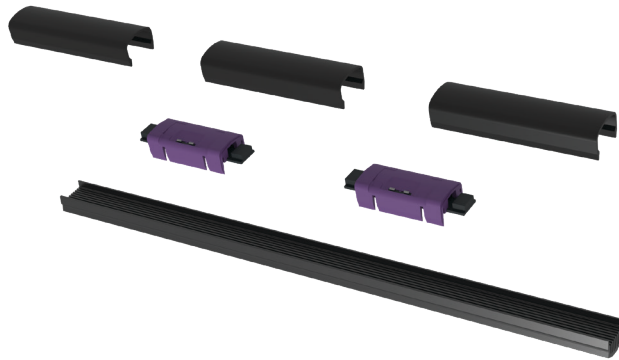
## FUNCTIONAL DESCRIPTION

Stream is an airflow measurement platform designed for simple use and easy installation. It consists of a transmitter [that comes standard with BACnet], mobile app for diagnostics and configuration, and plug-and-play sensor nodes. Stream offers a variety of airflow measurements for your building, some of which are velocity, temperature, humidity, and CO2.

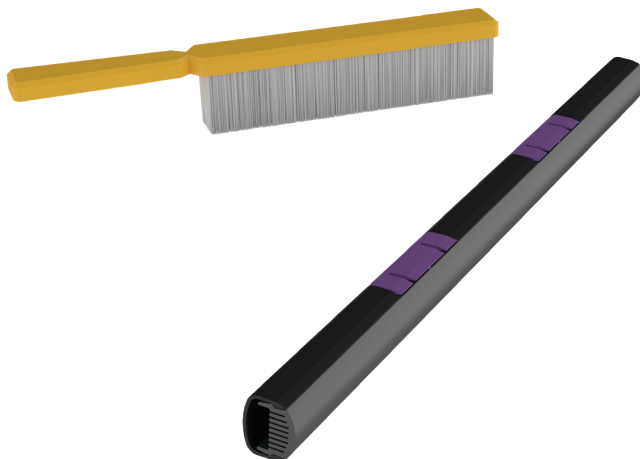
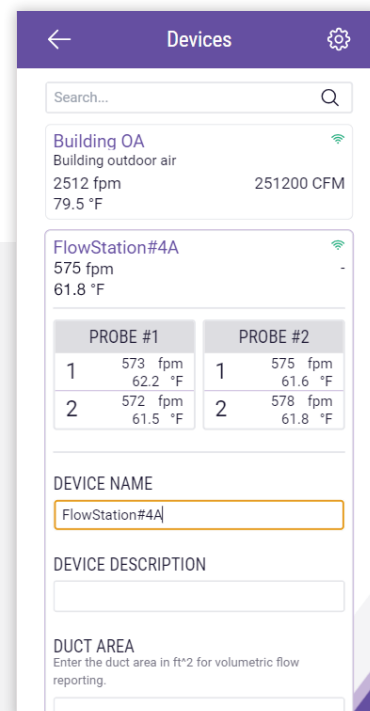


## FEATURE HIGHLIGHTS

Every aspect of Stream was designed with ease of installation, use and maintenance in mind. Installation is a breeze: probes come preinstalled with sensors and can be inserted with a 1 ½" round hole with mounting options for inside or outside rectangular or round ductwork. Four-wire cables are used to connect between transmitter-to-probe and probe-to-probe in a daisy-chain style wiring. All cables are terminated with screw-pluggable terminal blocks. Retrofitting CO2 or humidity sensing is simple with snap on, plug-and-play sensors. In the unlikely event that a sensor is damaged, replacement is just as easy.



Setting up and using Stream is simple with the aid of Scout's mobile app. Transmitters connect to the app using Bluetooth. Setup is virtually automatic: sensors are detected, and on-board barometric pressure sensor is used for density compensation. Duct area is input for volumetric flow feedback. Individual sensor readings are easily accessible within the app along with other diagnostics and configuration options.



Stream sensors are designed with minimal maintenance in mind. Outdoor and return air inherently carries particulate matter, such as dust. As such, Stream's sensor elements have been designed to limit their exposure to the airstream as much as possible, while maintaining superb measurement accuracy. In doing so, dust and debris buildup on the sensor is minimized, though periodic maintenance may still be required. The sensor elements can be easily cleaned of any contaminants simply by wiping them with a soft-bristle brush or cloth.

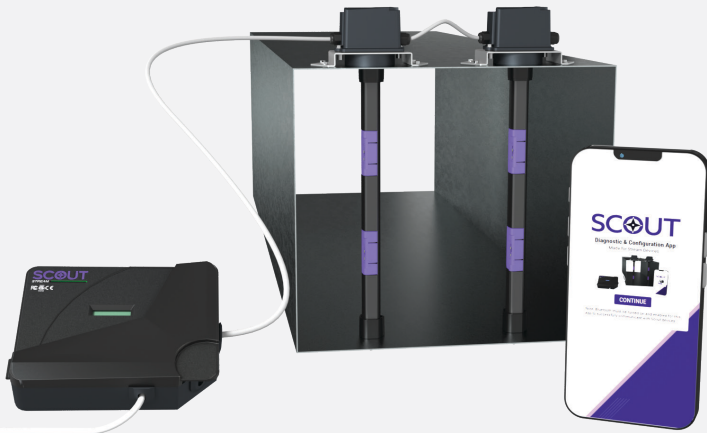
## TYPICAL APPLICATIONS

- + VAV flow feedback
- + Small & large duct flow sensing
- + Outside, return or supply flow feedback



## FEATURES

- + Glass encapsulated, hermetically sealed sensor elements
- + 3% of reading accuracy
- + BACnet MS/TP (standard)
- + Bluetooth (standard)
- + General purpose inputs<sup>1</sup>
- + Configurable analog outputs (flow, temperature, etc.)
- + UL/CSA Certified (UL/CSA 60730-1)
- + CE compliant



<sup>1</sup>General purpose inputs can be used for connecting other analog sensors and report over Bluetooth or BACnet.

## SPECIFICATIONS & DIMENSIONS

See the latest information located in the product submittal available at [www.ScoutTechnologies.com](http://www.ScoutTechnologies.com)









Product Improvement is a continuing endeavour at ScoutTechnologies. Therefore, specifications are subject to change without notice.

Consult your Sales Representative for current specifications or more detailed information. Not all products may be available in all geographic areas. All goods described in this document are warranted as described in the Limited Warranty.

The complete product catalog can be viewed online at [ScoutTechnologies.com](https://ScoutTechnologies.com)